

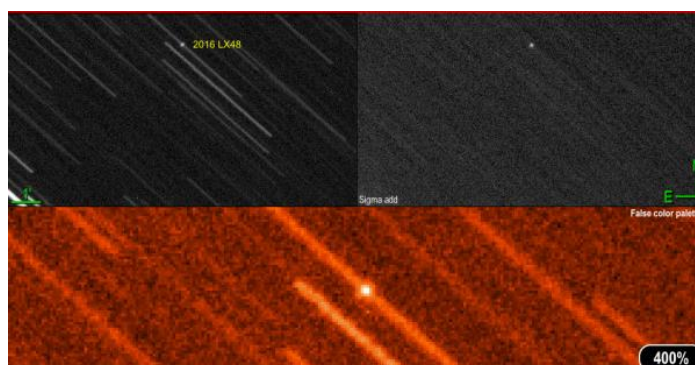
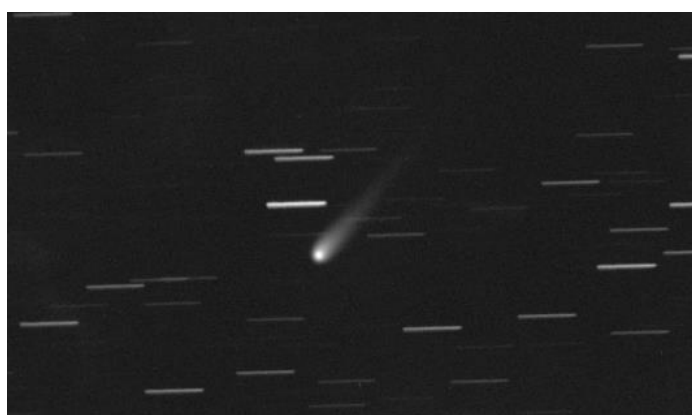


"ASSOCIAZIONE ASTRONOMICA G. MONTANARI"
OSSERVATORIO ASTRONOMIC DI CAVEZZO – (IAU code 107)
Via per Concordia n°200 - 41032 Cavezzo (MO) - Italy
(IAU code 107) - www.astrocavezzo.it

SINTESI DELL'ATTIVITA' ASTROMETRICA

(COMETE EASTEROIDI)

- 2016 -



ASSOCIAZIONE ASTRONOMICA "G. MONTANARI"

via per Concordia 200 - 41032 Cavezzo (MO) - Italy

lat. 44°51'57" N - long. 11°00'11" E

©2016 - Associazione Astronomica "G. Montanari" Cavezzo (MO) - Italy

COMETE MISURATE

<i>Designazione</i>		<i>N° Posizioni</i>
2P	<i>Encke</i>	5
9P	<i>Tempel</i>	22
45P	<i>Honda – Mrkos – Pajdusakova</i>	3
53P	<i>Van Biesbroeck</i>	15
56P	<i>Slaughter – Burnham</i>	22
67P	<i>Churyumov - Gerasimenko</i>	5
74P	<i>Smirnova – Chernykh</i>	3
81P	<i>Wild o Wild 2</i>	9
93P	<i>Lovas</i>	3
180P	<i>Neat</i>	6
211 P	<i>Hill</i>	3
226P	<i>Pigott – LINEAR – Kowalsky</i>	11
252P	<i>LINEAR</i>	9
329P	<i>LINEAR-Cataloina</i>	3
C/2011 KP36	<i>Spacewatch</i>	3
C/2013 X1	<i>PanSTARRS</i>	13
C/2013 US10	<i>Catalina</i>	27
C/2014 A4	<i>Sonear</i>	16
C/2014 S2	<i>PanSTARRS</i>	18
C/2014 W2	<i>PanSTARRS</i>	27
C/2015 V1	<i>PanSTARRS</i>	3
C/2015 V2	<i>Jhonson</i>	11
C/2015 VL62	<i>Lemmon - Yeung - PanSTARRS</i>	10
C/2016 A8	<i>Linear</i>	38

Total obj. : 24

Total Obs. : 285

ASTEROIDI MISURATI

<i>Designazione</i>	<i>Design. alternativa</i>	<i>N° Posizioni.</i>	<i>Orbit Type (1)</i>
631	<i>1907 GL</i>	3	<i>MB</i>
1244	<i>1908 TD</i>	3	<i>MB</i>
1917	<i>1968 AA</i>	3	<i>NEA Amor</i>
3352	<i>1981 CW</i>	4	<i>NEA Amor 1+Km NEO</i>
4179	<i>1989 AC</i>	3	<i>NEA Apollo- PHA</i>
4031	<i>1985 CL</i>	3	<i>HUN</i>
4195	<i>1982 SK8</i>	3	<i>MB</i>
4350	<i>1989 UG1</i>	2	<i>MB</i>
5131	<i>1990 BG</i>	3	<i>NEA Apollo</i>
5836	<i>1993 MF</i>	9	<i>NEA Amor</i>

6856	1989 EM	3	MB
7343	1992 GE2	3	MB
8195	1993 UC1	3	MB
8359	1989 WD	2	MB
9004	1982 UZ2	3	MB
10357	1993 SL3	2	MB
10633	1998 DP1	3	MB
10999	1978 VC6	3	MB
11932	1993 EP	3	MB
12538	1991 JW3	3	MB
13030	1989 PF	3	MB
13249	1998 MD38	3	MB
13678	1997 NE11	3	MB
14220	1999 VE115	3	MB
15560	2000 GR24*	3	MB
18355	1990 RN9	3	MB
18816	1999 LW25	3	MB
19516	1998 QF80	3	MB
19569	1999 KM15	3	MB
20614	1991 JK6	3	MB
20743	2000 AR6	3	MB
21826	1998 FZ50	3	MB
22135	2000 UA100	3	MB
23448	1988 BG	3	MB
24861	1999 DE1	3	MB
25620	1981 CW	3	NEA Amor
29376	1996 GU17	3	MB
30381	2000 JN76	3	MB
33014	1997 FE4	3	MB
33786	1999 RJ196	3	MB
34817	2001 SE116	6	HUN
36548	2000 QN99	3	MB
37591	1991 TD4	2	MB
38255	1999 RH10	3	MB
39810	1997 WQ35	3	MB
41331	1999 XB32	3	MB
44232	1998 QJ28	3	MB
46818	1998 MZ24	2	MCR
49267	1998 UU6	3	MB
51386	2010 NH65	3	MB
51687	2001 KP12	3	MB
56461	2000 GX96	3	MB
59638	1999 JH82	3	MB
61733	2000 QU150	2	MB
62115	2000 RW99	3	MB

67976	2000 XA7	3	MB
69931	1998 UA	3	MB
70081	1999 JX81	3	MB
71048	1999 XA87	3	MB
76842	2000 TQ33	3	HUN
78754	2002 TA295	3	MB
82585	2001 OV87	3	MB
96590	1998 XB	3	NEA Aten
96818	1999 RW171	3	MB
101618	1999 CN9	4	MB
102250	1999 TU27	3	MB
104567	2000 GC75	3	MB
114799	2003 NP6	3	MB
137444	1999 TE245	3	MCR
138846	2000 VJ61	3	NEA Apollo
138859	2000 WN63	3	NEA Apollo
142940	2002 VX68	3	MB
145784	1998 KY3	3	MB
149193	2002 LO27	3	MCR
153099	2000 SY10	3	HUN
154244	2002 KL6	3	NEA Amor**
163023	2001 XU1	3	NEA Aten
185851	2000 DP107	3	NEA Apollo-PHA*
189601	2000 WR155	3	MB
190662	2000 YD86	3	MB
193205	2000QC192	3	MB
202179	2004 XU11	3	MB
203217	2001 FX9	3	NEA Amor
225416	1999 YC	6	NEA Apollo**
232024	2001 TL32	3	MB
252793	2003 WR170	6	NEA Amor
300834	2007 XS32	3	MB
306540	2000 QB93	3	MCR
326683	2002 WP	8	NEA Amor
337104	1999 NN22	3	MCR
344074	1997 UH9	3	NEA Aten**
345705	2006 VB14	4	NEA Aten
452389	2002 NW16	13	NEA Amor
467963	2012 JT17	12	NEA Amor
470510	2008 CJ116	3	NEA Amor
1155514	2003 UL36	2	MB
	2001 YE4	7	NEA Aten - PHA*
	2005 WS3	4	NEA Aten
	2005 TF	13	NEA Amor
	2006 UM	10	NEA Amor
	2009 TB8	3	NEA Apollo

	2012 XE17	3	NEA Amor
	2012 TQ78	3	NEA Apollo
	2014 KD91	3	NEA Amor
	2016 LX48	6	NEA Apollo-PHA*
	2016 PZ66	12	NEA Amor
	2016 NL15	15	NEA Apollo
	2016 YM	4	NEA Amor
	2016 XH1	4	NEA Apollo
	2016 VY5	4	NEA Amor
	2016 UE101	4	NEA Amor
NEOCP	2016 TP2	3	NEA Apollo
NEOCP	2016 TQ2	3	NEA Apollo
NEOCP	2016 TS55	3	NEA Amor
NEOCP	2016 TH55	3	NEA Apollo-PHA*
NEOCP	2016 UD41	3	NEA Apollo

Total obj. : 116

Total Obs. : 433

(1) MB = Main Belt MCR = Mars Crosser NEA = Near Earth Asteroid HUN = Hungaria

(*) - PHA: Potentially Hazardous Asteroid

(**) - Critical list numbered object

NEO FOLLOW UPS (NEOCP)

<u>Designazione</u>			<u>N° MPEC</u>
1	XT2D93F	K16T02Q = 2016 TQ2	MPEC 2016-T40
2	XT8CF50	K16T02P = 2016 TP2	MPEC 2016-T39
3	XT9AB48	K16T55S = 2016 TS55	MPEC 2016-T134
4	XT997BA	K16T55H = 2016 TH55	MPEC 2016-T129
5	A101gKF	K16U41D = 2016 UD41	MPEC 2016-U92

Observer: M.Facchini, R.Bonomi,P.Negrelli, D.Caiumi

Measurer: R.Bonomi, P.Negrelli

CHIUSURA ANNUALE DELLE OSSERVAZIONI

<http://www.minorplanetcenter.net/iau/special/CountObsByYear.txt>

Year	Objects					Observations			
	Obs.	Num MPs	Unnum MPs	Comets	Sats	Num MPs	Unnum MPs	Comets	Sats
2016	511	78	8	21	0	252	30	229	0
2015	143	4	0	16	0	9	0	134	0
2014	0	0	0	0	0	0	0	0	0
2013	13	0	0	3	0	0	0	13	0
2012	0	0	0	0	0	0	0	0	0
2011	5	0	0	2	0	0	0	5	0
2010	14	1	0	5	0	2	0	12	0
2009	0	0	0	0	0	0	0	0	0
2008	0	0	0	0	0	0	0	0	0
2007	18	1	2	2	0	2	12	4	0
2006	12	1	0	4	0	2	0	10	0
2005	3	0	0	1	0	0	0	3	0
2004	11	4	0	0	0	11	0	0	0
2003	36	4	0	5	0	12	0	24	0
2002	22	1	1	1	0	3	15	4	0
2001	51	10	3	7	0	29	7	15	0
2000	23	4	0	0	0	23	0	0	0
1999	63	7	0	8	0	44	0	19	0
1998	63	2	0	7	0	20	0	43	0
1997	15	1	0	2	0	5	0	10	0
1996	236	18	1	11	0	57	3	176	0
1995	102	13	0	2	0	90	0	12	0
1994	85	23	0	7	0	59	0	26	0
1993	441	39	0	11	0	193	0	248	0
1992	71	2	0	5	0	10	0	61	0
Tot.	1427	135	7	83	0	571	37	819	0

RESIDUI SULLE OSSERVAZIONI DEI PIANETI MINORI NON NUMERATI

<http://www.minorplanetcenter.net/iau/special/residuals.txt>

Year	Tot	<1"	<2"	<3"	>4"	>=4"	RA.	DEC.
2016	49	47	2	0	0	0	+0.05+/-0.32	+0.14+/-0.33
2015	9	8	1	0	0	0	-0.00 +/- 0.48	+0.08 +/- 0.54
2010	2	2	0	0	0	0	-0.01 +/- 0.11	-0.56 +/- 0.85
2007	2	2	0	0	0	0	-0.06 +/- 0.11	+0.23 +/- 0.32
2006	2	2	0	0	0	0	+0.13 +/- 0.05	-0.25 +/- 0.01
2004	10	10	0	0	0	0	-0.01 +/- 0.36	+0.13 +/- 0.19
2003	12	11	1	0	0	0	-0.04 +/- 0.46	+0.01 +/- 0.29
2002	3	3	0	0	0	0	-0.10 +/- 0.29	+0.10 +/- 0.21
2001	28	16	5	3	4	0	-0.46 +/- 1.37	+0.38 +/- 0.93
2000	23	14	7	1	1	0	-0.01 +/- 1.00	+0.17 +/- 0.86

1999	44	24	12	7	1	0	+0.07 +/- 1.06	-0.23 +/- 0.98
1998	20	17	3	0	1	0	-0.15 +/- 0.64	+0.02 +/- 0.33
1997	5	1	3	0	1	0	+0.03 +/- 1.52	-0.99 +/- 0.34
1996	56	36	14	4	2	0	-0.17 +/- 0.89	+0.07 +/- 0.84
1995	87	40	26	10	11	0	+0.00 +/- 1.31	-0.11 +/- 1.17
1994	55	30	20	5	0	0	+0.27 +/- 0.90	-0.01 +/- 0.91
1993	189	116	49	20	4	0	+0.16 +/- 0.76	+0.06 +/- 1.00
1992	10	5	4	1	0	0	+0.19 +/- 0.66	+0.63 +/- 0.88

RESIDUI SULLE OSSERVAZIONI DEI PIANETI MINORI NUMERATI

<http://www.minorplanetcenter.net/iau/special/residuals2.txt>

Year	Tot	<1"	<2"	<3"	>4"	>=4"	RA.	DEC.
2016	271	241	26	4	0	0	+0.06+/-0.52	+0.12+/-0.46
2015	116	88	20	8	0	0	-0.14 +/-0. 69	+0.01 +/- 0.65
2013	13	8	5	0	0	0	-0.17 +/- 0.78	+0.12 +/- 0.55
2011	5	5	0	0	0	0	+0.06 +/- 0.39	-0.05 +/- 0.27
2010	16	11	5	0	0	0	-0.34 +/- 0.73	-0.08 +/- 0.49
2007	14	4	3	2	5	0	+0.36 +/- 0.89	-1.49 +/- 1.54
2006	12	8	4	0	0	0	-0.11 +/- 0.49	-0.48 +/- 0.58
2005	3	3	0	0	0	0	-0.80 +/- 0.19	+0.06 +/- 0.09
2004	13	13	0	0	0	0	-0.02 +/- 0.32	+0.13 +/- 0.18
2003	27	25	2	0	0	0	-0.15 +/- 0.33	+0.11 +/- 0.34
2002	16	10	2	2	2	0	-0.88 +/- 0.97	+0.36 +/- 1.08
2001	52	27	13	7	5	0	-0.42 +/- 1.21	+0.36 +/- 0.96
2000	23	14	7	1	1	0	-0.01 +/- 1.00	+0.17 +/- 0.86
1999	50	27	15	7	1	0	+0.03 +/- 1.03	-0.16 +/- 0.94
1998	25	19	5	0	1	0	-0.19 +/- 0.78	+0.23 +/- 0.61
1997	5	1	3	0	1	0	+0.03 +/- 1.52	-0.99 +/- 0.34
1996	169	68	52	33	16	0	+0.11 +/- 1.07	+0.55 +/- 1.31
1995	97	44	30	11	12	0	-0.07 +/- 1.30	+0.01 +/- 1.17
1994	63	30	20	7	6	0	+0.62 +/- 1.25	-0.02 +/- 0.94
1993	294	153	84	44	13	0	+0.09 +/- 1.03	+0.05 +/- 1.09
1992	10	5	4	1	0	0	+0.19 +/- 0.66	+0.63 +/- 0.88

DISTRIBUZIONE MENSILE DELLE OSSERVAZIONI

Gennaio	23 +6 (2015)
Febbraio	19
Marzo	25
Aprile	24
Maggio	29
Giugno	0
Luglio	26
Agosto	85
Settembre	156
Ottobre	128
Novembre	125
Dicembre	112
Totale	758

Ricerca curata da:

Bonomi Roberto

Cavezzo, 01/01/2017